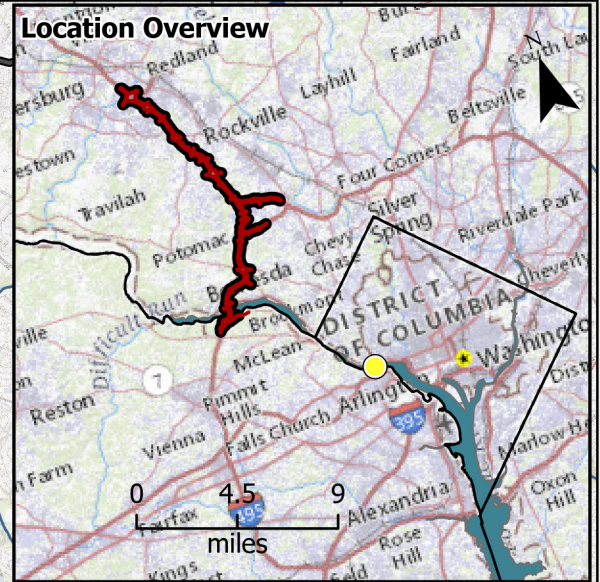
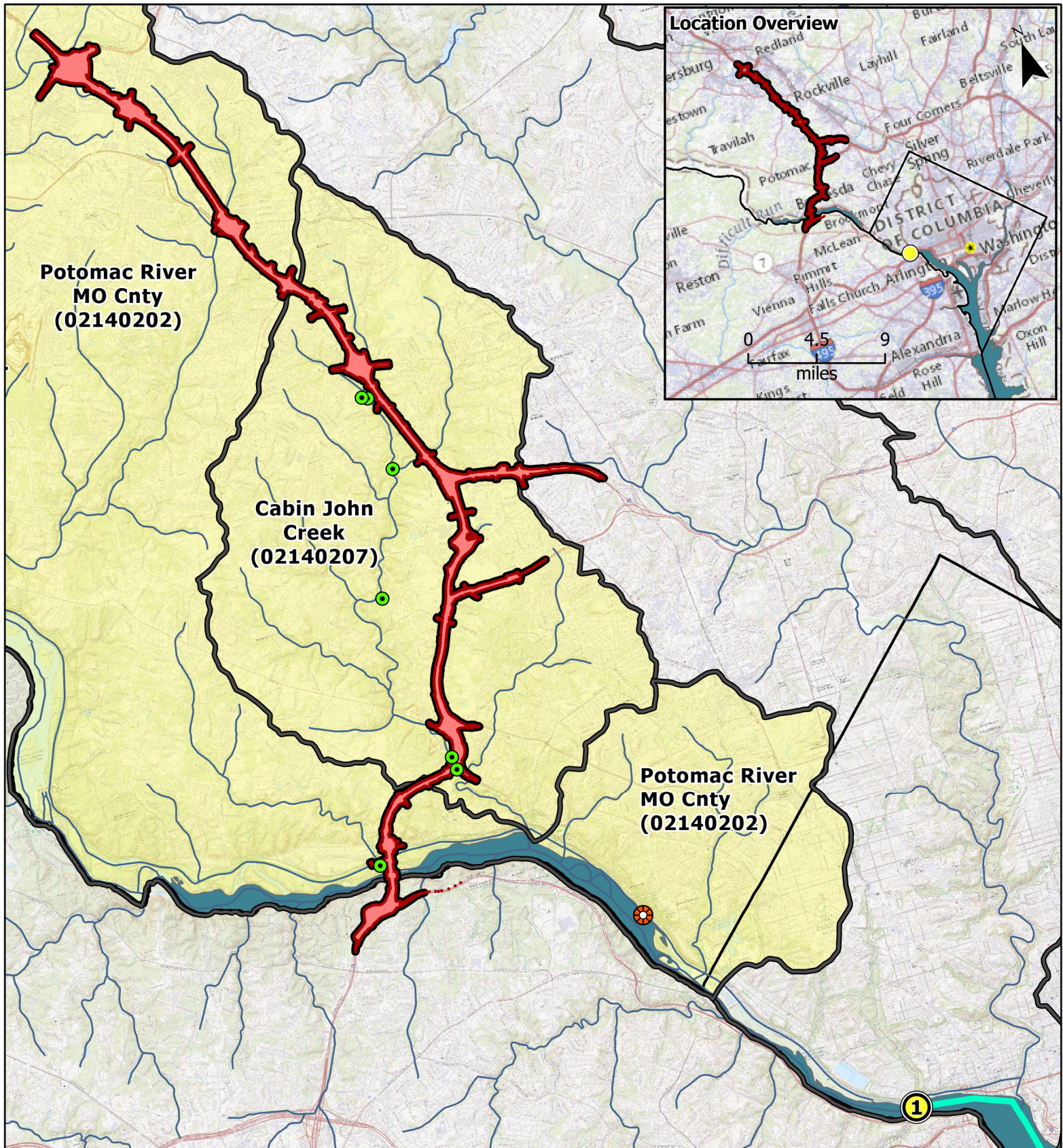


## **APPENDIX F3**

### **USGS MAP SHOWING POTENTIAL DISCHARGE INTO NAVIGABLE WATERS FOR PARK MITIGATION AREAS**





# **I-495/I-270 Managed Lane Study Phase 1 South Water Quality Certification**

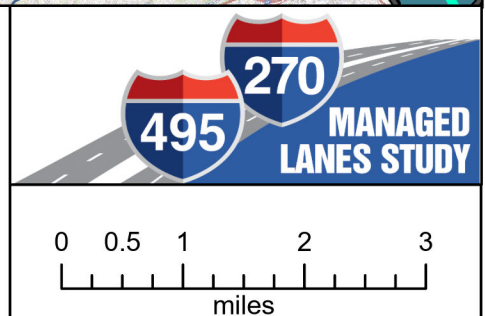
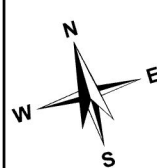
Appendix F3: USGS Map Showing  
Potential Discharge into Navigable Waters  
for Park Mitigation Areas

Maryland  
June 2022

Source: Falls Church, Washington West, Rockville, and Kensington  
Quadrangle Maps, 2020

- Limit of Disturbance \*
  - Maryland 8-digit Watershed
  - Maryland Transit-Navigable Waterways
  - Park Mitigation
  - 2 Navigable Waters Discharge Location
  - Washington Aqueduct - Little Falls Intake
- Area Drains To Location**
- 1
  - 2

\* Temporary and permanent LODs combined.





**Table 3: Navigable Waters Discharge Point Locations for Park Mitigation Areas**

Site Name	Park	Navigable Waters Discharge Location Number	Latitude	Longitude
Gainsborough Rd LOD	Cabin John Regional Park	1	38° 54' 13.90397"	-77° 04' 51.55569"
Ped Bridge at Goya Drive	Cabin John Regional Park	1	38° 54' 13.90397"	-77° 04' 51.55569"
Ped Bridge to Campground	Cabin John Regional Park	1	38° 54' 13.90397"	-77° 04' 51.55569"
Cabin John Cr Downstream	Cabin John SVU 2	1	38° 54' 13.90397"	-77° 04' 51.55569"
Cabin John Cr Upstream	Cabin John SVU 2	1	38° 54' 13.90397"	-77° 04' 51.55569"
Greentree Rd LOD	Cabin John SVU 5	1	38° 54' 13.90397"	-77° 04' 51.55569"
NPS Wetland Restoration	NPS GWMP	1	38° 54' 13.90397"	-77° 04' 51.55569"